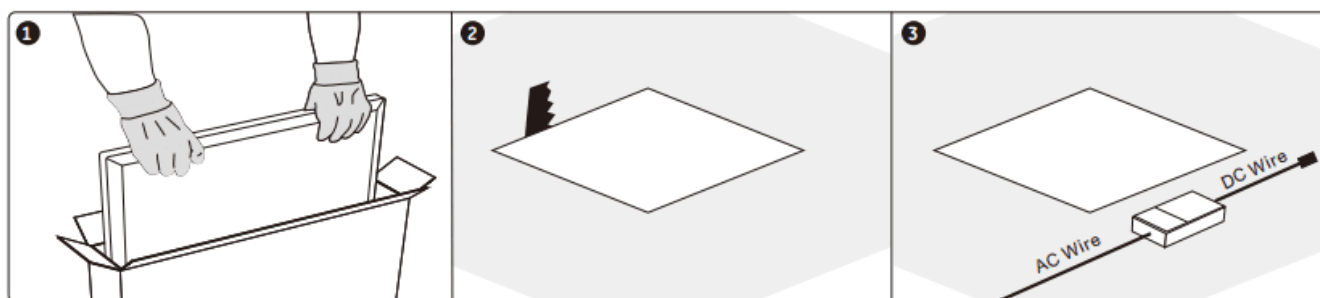


- Installation and wiring of luminaire must be in accordance with all applicable local codes.
- Installation, inspection, and maintenance of luminaires should be performed by a qualified electrician.
- DO NOT make or alter any open holes in the luminaire. Do not modify the luminaire.
- DO NOT install damaged product.
- Make sure electrical power is OFF before and during installation and maintenance.
- Make sure the equipment is properly grounded.
- Make sure the supply voltage is same as the rated fixture voltage.

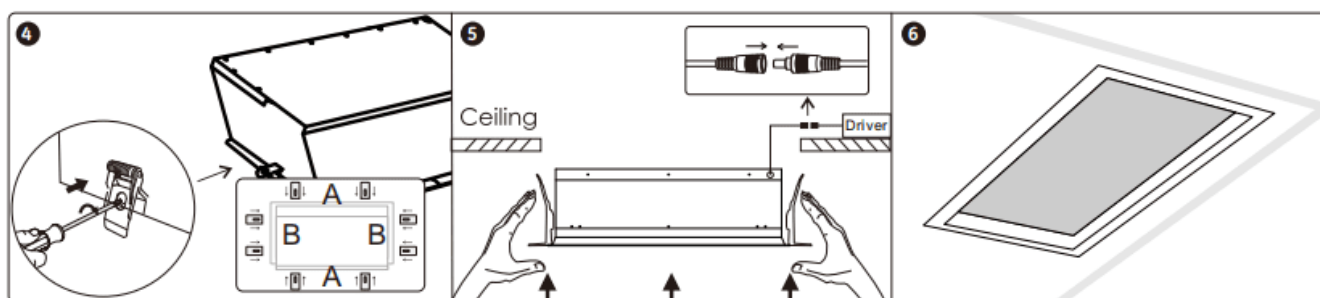
Recessed Plasterboard Cut Hole Ceiling Installation



Take the panel out of the box and protective bag.
Remove the protective film.

Cut a square hole in the ceiling 10mm smaller than
the LED Panel.

Connect the LED Driver to AC mains.



Screw the springs. (optional Locked by default.)
If String Closely installation, need to change the
position of the springs.

Connect the DC connector from driver to panel.
Push the Light into the ceiling with the springs raised.
Pay attention to the direction of light.

Tear off the protective film of the lampshade and
turn on the skylight.

Installation Location

